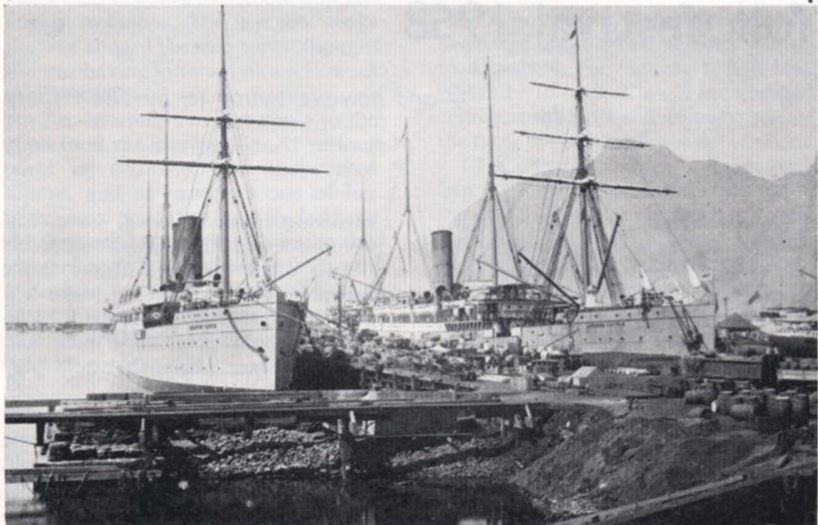


From our picture archives



Two Castle mailships of long ago lie alongside their berths in Cape Town. They are Dunottar Castle (5,625 tons, 1890) and Arundel Castle (4,588 tons, 1895). The first was withdrawn from service in 1904 and subsequently chartered out. The second was sold for further trading in 1905. This picture, taken about 1902, shows in the foreground some of the piling and infilling works that were going on at that time to improve the harbour works of Table Bay. Just before then, the breakwater had been carried out to a length of nearly 4,000 feet, and a large, deep, outer harbour was in course of completion. (First in a series from our picture archives. Information by group archivist John Norton)